



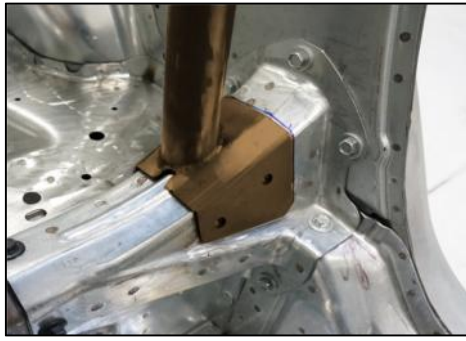
WATSON RACING is PROUD to introduce its NEW

2005-2014 Mustang 4- & 6-POINT BOLT-IN ROLL BARS
2015+ Mustang 4- & 6-POINT BOLT-IN ROLL BARS



Watson Racing, LC
18703 Dix Toledo Rd
Brownstown, MI 48193

855-928-7223



Bolts to the Ford-engineered corner gussets with heavy 1/8" thick steel plate. Don't risk the strength of your car to flimsy aftermarket gussets.



Precision-machined tube joints for rear two supports. TIG welded 360 degrees + plug welded. A seriously strong joint that is far superior to through-bolted slip-fit tubes.



Shoulder harness retainers keep your belts in place.

- Quick-in and Quick-out design, perfect for weekend racers.
- Minimal Trim Panel modification, if at all.
- Full seat slide travel.
- Constructed of heavy duty 1.75" x .120" DOM steel tube.
- Precision CNC mandrel bending provides consistency & an exact fit every time.
- Standard fixed harness bar and diagonal cross brace.
- Fewer bends provide superior strength over other designs.
- Fully TIG welded and powder coated Watson Racing Carbon Gray or Gloss Red.

Watson Racing, LC
18703 Dix Toledo Rd
Brownstown, MI 48193

855-928-7223